

INTRODUCTION

What is the PROTECT Initiative (Preventing Overdoses and Treatment Errors in Children Taskforce)? [1]

- Aims to prevent unintentional medication overdoses in children particularly under 5 years old.
- It also focuses on health concern in the rise in over-the-counter and prescription medication.

In Indiana, cannabis is illegal recreationally

- 10,334 exposures in 2015—2023 (June 30)
- At least 41% of cases 0—12 years old are edibles
- Recent upward trend in Indiana

OBJECTIVES:

- Analyze the reason why children are attracted to cannabis products
- Analyze the trends of cannabinoid exposures in teens

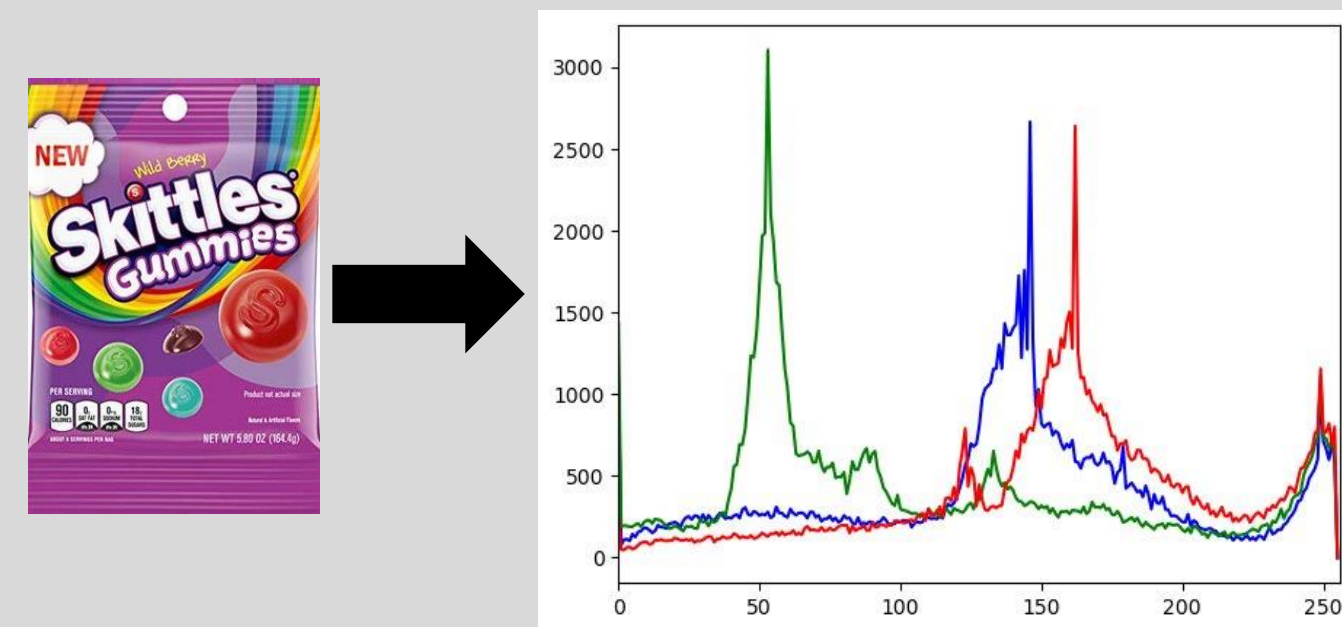
METHODOLOGY

INDIANA POISON CONTROL

- Receive data from Indiana Poison Control Center
- Clean/organize data
 - Substances categorized based on ingredients
 - Therapies categorized based on treatment type
 - Medical effects categorized based on most affected system
- Visualize data
 - Display distributions of therapies and medical effects through matplotlib pie charts
 - Display acuity vs duration through matplotlib stacked bar charts

MARIJUANA SCRAPING

- Collect candy edibles data from major cannabis dispensary (Weedmaps, Grassdoor)
 - Desired output: Product name, Packaging image, Candy type, THC (% , mg), CBD (% , mg)
- Analyze color distribution in packaging. Visualize it as histogram of RGB color code values (0-255)
- Collect 30 – 40 packaging images of children’s candy from various brands.
- Compare similarity between packaging of candy edibles and children’s candies



SUMMARY

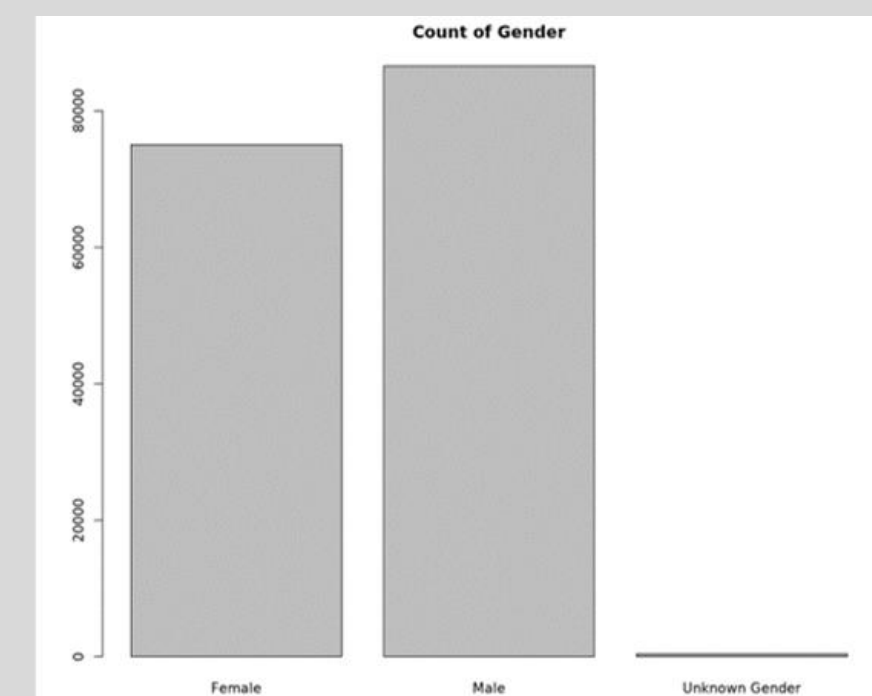
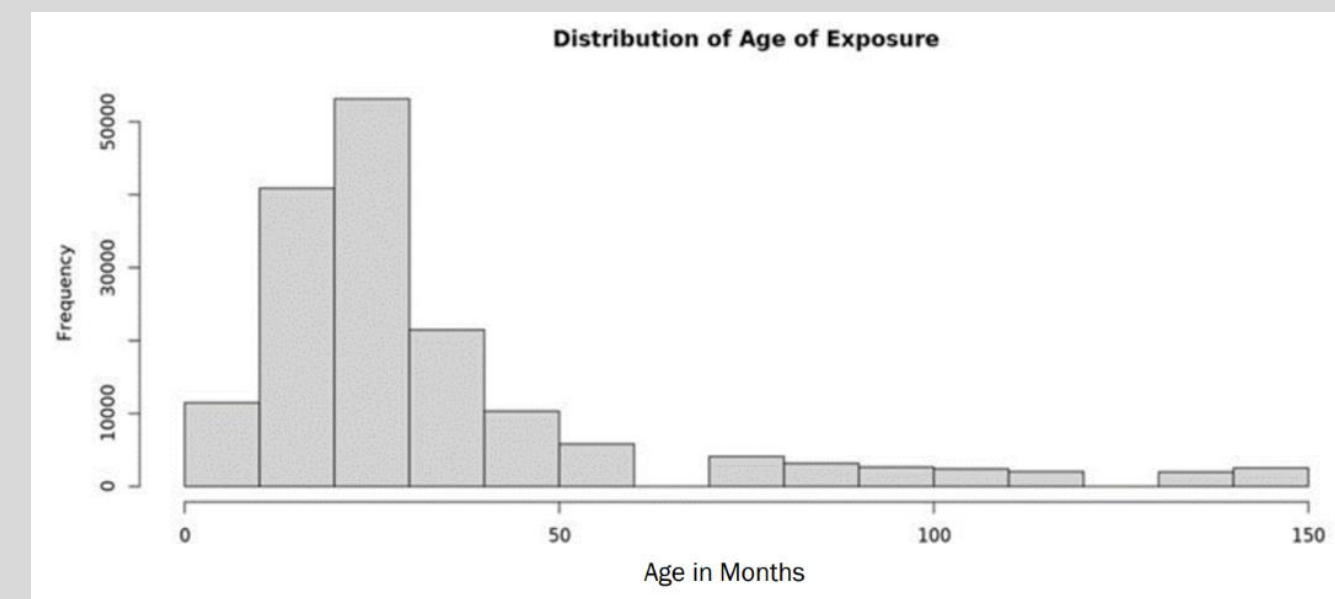
SYSTEMS AFFECTED:

- The most affected system was the neurological system
- Followed by the cardiovascular system
- And then the GI/Endocrine system

REASONS AND MOTIVES:

- The primary reason behind cases was intentional marijuana abuse
- With unintentional usage in second
- And intentional suicide attempts in third

CASE DEMOGRAPHICS

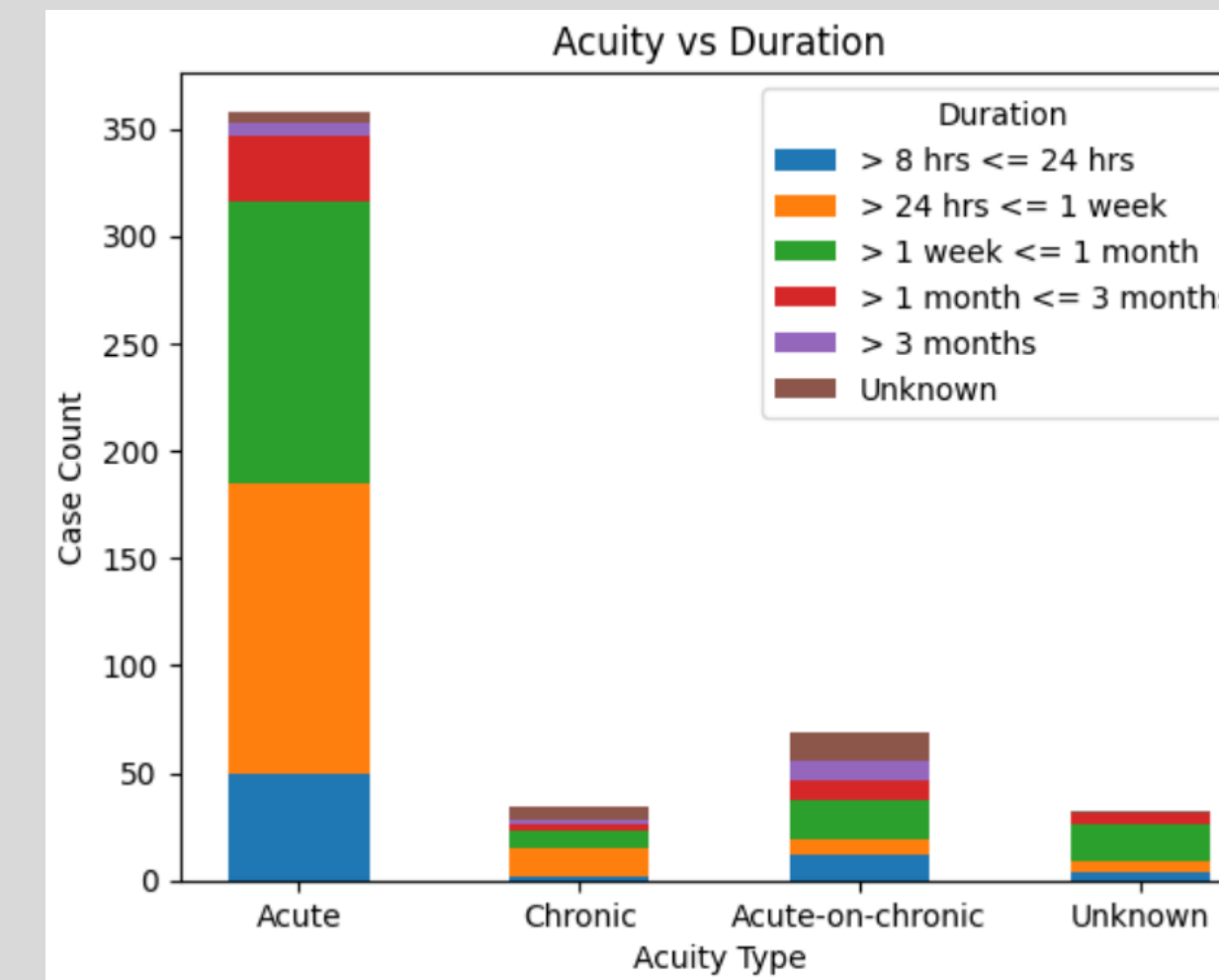


The majority of cases are those under 5 years old

There isn't a significant difference between genders

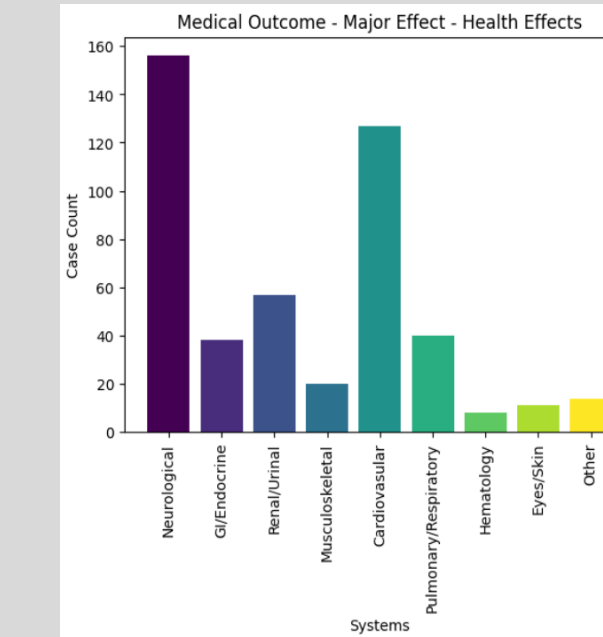
RESULTS: INDIANA POISON CENTER

ACUITY VS DURATION – MARKED CASES



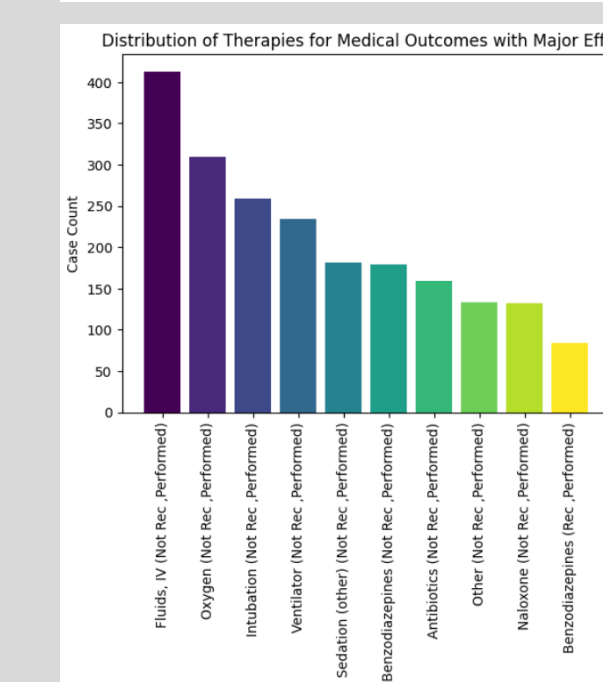
Vast majority of cases are acute
Majority of cases have a short duration
Not all cases had an acuity rating – chart shown is a subset of all cases

MAJOR OUTCOME: HEALTH EFFECTS & THERAPIES APPLIED



Neurological systems are affected less frequently

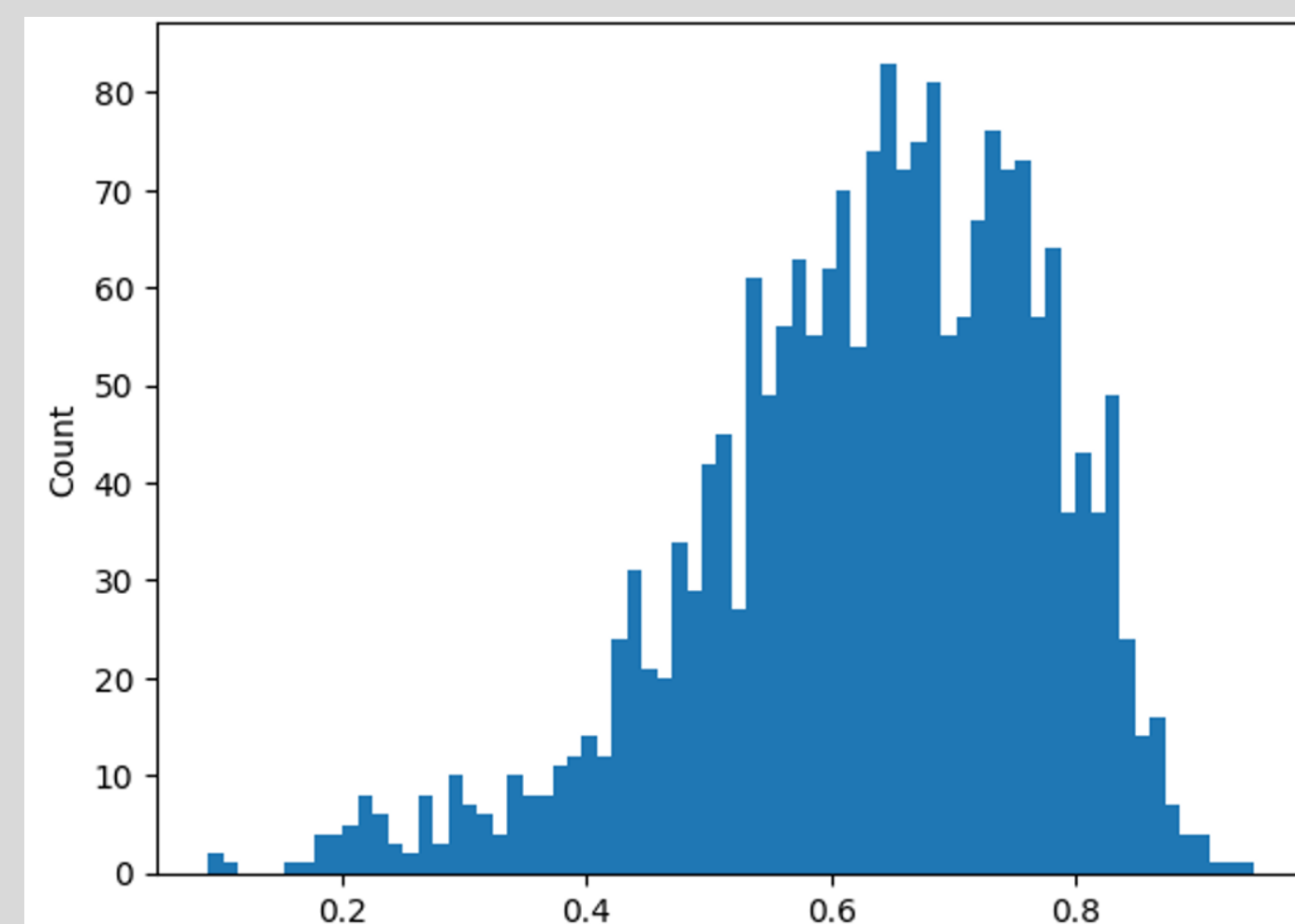
GI/endocrine and renal/urinal systems' cases increase



Observation only not an option due to severity

No therapy is recommended

RESULTS: MARIJUANA PACKAGING SIMILARITY



- Approximately 2000 edibles packages compared with 36 sample children candies packages.
- Most candies edibles packages share 60 - 70% color similarity to actual children candy's packages.
- Mean: 0.618 Standard Deviation: 0.146 Median: 0.637 (0 = least similar, 1 = most similar)



- Life Savers Gummies Neon (297) and Snickers (262) share the most similarity with candies edibles packages.
- Candy edibles contain color palettes similar to other gummies and chocolate packages.
- White packages are harder to compare due to difficulties cropping it from the background.

DISCUSSION AND FUTURE GOALS

CANNABIS PRODUCT PACKAGING:

- Colorful packaging has a higher similarity rate with other products, despite differences
- We assumed children find bright colors more appealing than the product's shape or actual color.

CANNABINOID INGESTION DATA FROM INDIANA POISON CENTER:

- Severe overdoses can lead to central nervous system depression, renal failure, and other serious health issues.
- Children's overdoses often result from adult oversight and mental health issues.

FUTURE GOALS

- Create a dashboard of statistical analysis we have performed
- Increase public awareness of substance abuse and policy implications

ACKNOWLEDGEMENTS

The Data Mine students of CDC PROTECT team would like to give our utmost appreciation to Dr. Deborah Spoerner, Thomas Huss, Khue Tran, and the rest of the Data Mine staff.

REFERENCES

[1] Centers for Disease Control and Prevention. (2023, Mar. 7). *Protect initiative: Advancing Children's medication safety*. Centers for Disease Control and Prevention. https://www.cdc.gov/medicationsafety/protect/protect_initiative.html