

Raja Ali, Logan Harris, Cody Hatfield, Kanav Khurana, Tanay Patel, Ethan Perdieu, Rohit Rao, Amith Revelly, Abhinav Vellalacheruvu

INTRODUCTION

Conservation and Revenue Opportunity Portal

- \$35.1B** Indiana ag economy
- 94,350** farmers across 15M acres
- 15M** Indiana farmland
- 150+** conservation & incentive programs

- SCATTERED PROGRAMS**
Programs are scattered across USDA, NRCS, ISDA, SWCDs, and private companies.
- MISSED OPPORTUNITIES**
Lack of a single access point means missed funding and lower program adoption.
- LEGISLATIVE IMPACT**
Indiana House Bill 1149 (2025) significantly increases the need for a solution.

ONLINE PORTAL

THE PROBLEM

Without C.R.O.P.:

- Search dozens of websites individually
- Different formats, deadlines, and requirements
- No way to filter by county, crop, or practice
- Programs go unfilled; practices are NOT adopted.

“I had no idea the NRCS would pay you.”
— Indiana farmer



OUR SOLUTION: C.R.O.P.

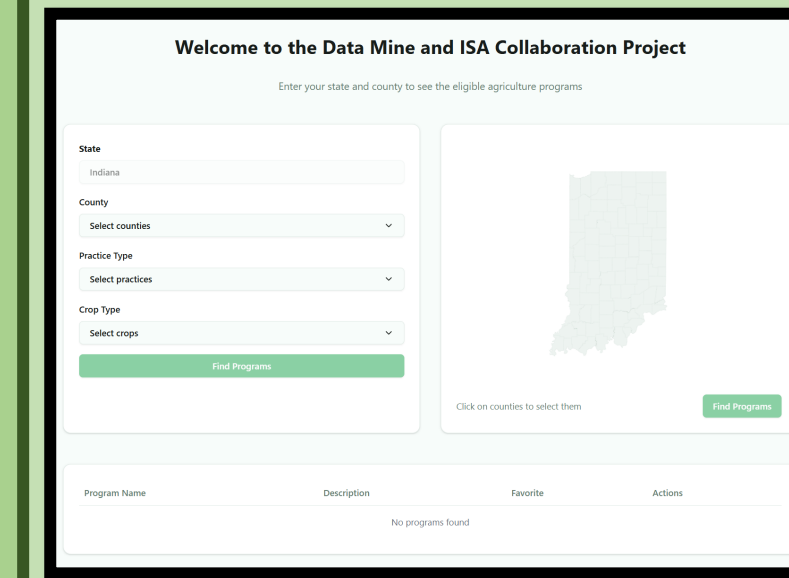


Fig 1: Landing Page.

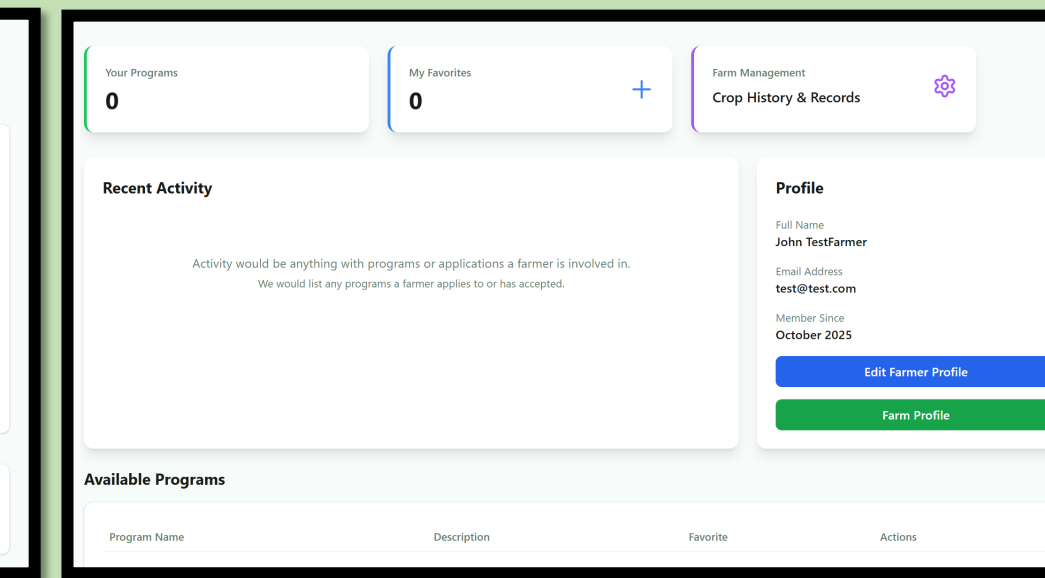


Fig 2: Farmer Dashboard.

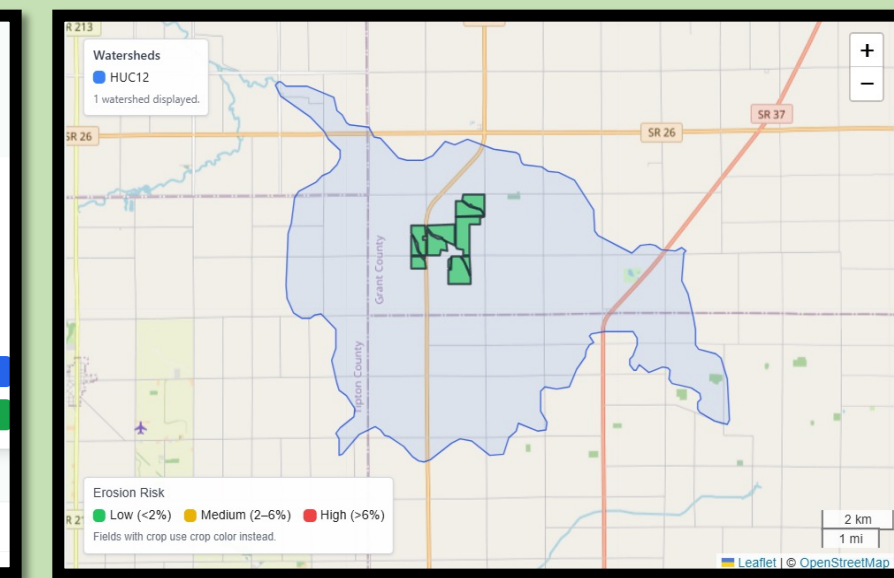
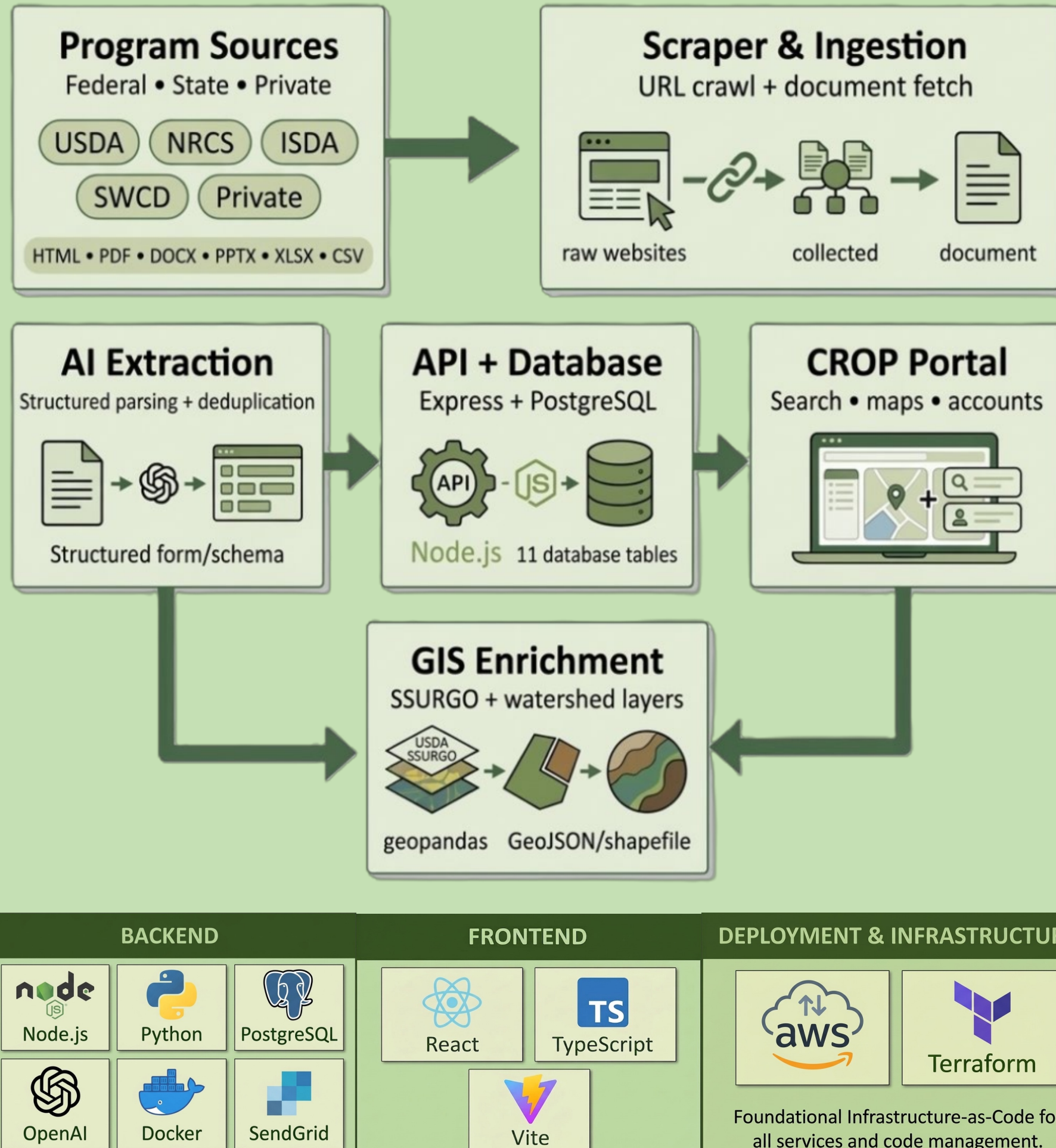


Fig 3: Field map with field & watershed boundaries with erosion risk via boundary file upload.

SCAN HERE ----->
TO
SEE IT IN ACTION!

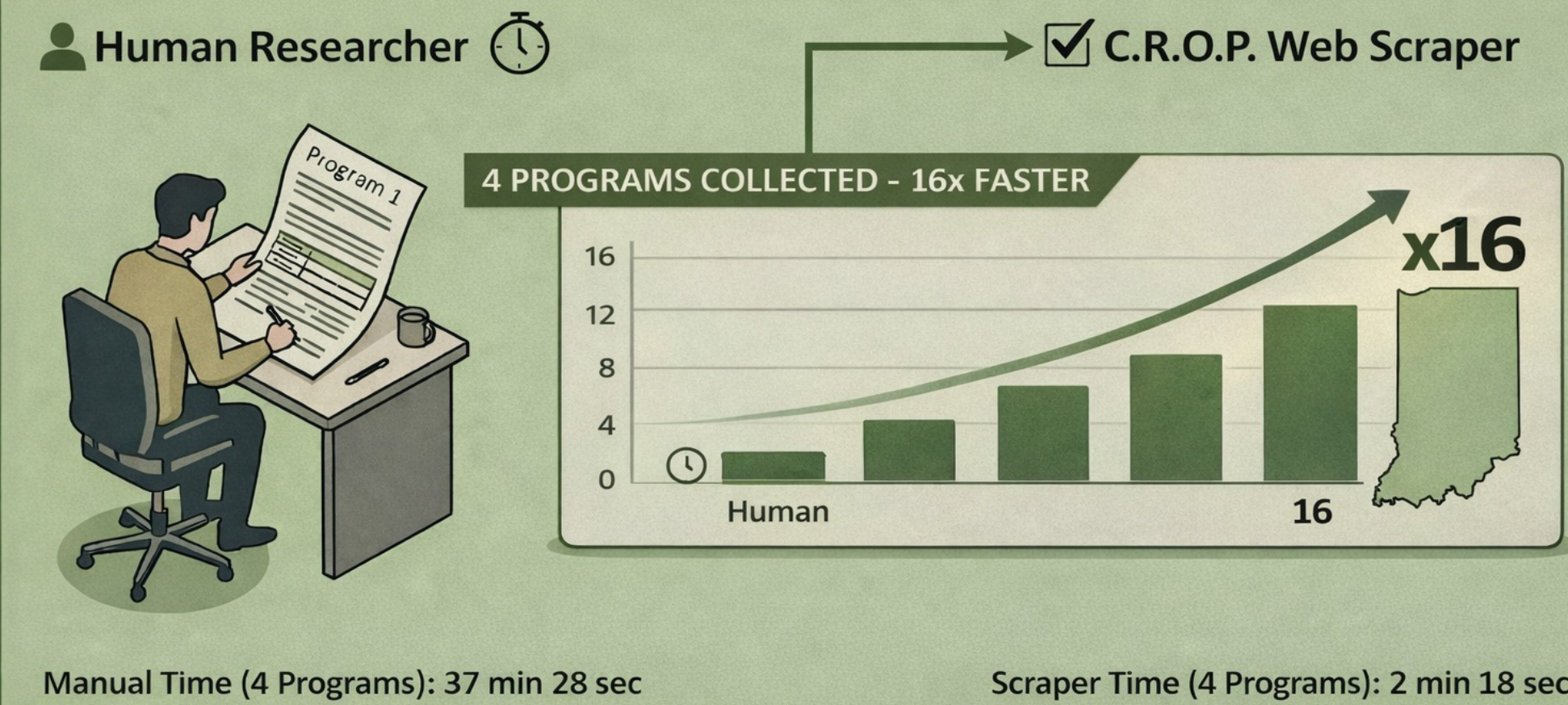


METHODOLOGY



KEY RESULTS

C.R.O.P. WEB SCRAPER: 16x FASTER THAN HUMAN RESEARCHER



MASSIVE TIME SAVINGS FOR FARMERS

- Secure Farmer Platform**: Email verification, Password reset, reCAPTCHA, Access & Refresh Tokens.
- Farm & GIS Tools**: Field dashboards, Shapefile upload, SSURGO analysis, Erosion mapping, Leaflet Visualization.
- Data, AI & Export**: URL Scraping & 6 file types, Automated data extraction, CSV/Excel export, AWS deploy, CI/CD automation.

FUTURE GOALS & CONCLUSIONS

- Advanced Analytics Dashboard**: A new dashboard to measure farmer engagement and track the program's overall impact.
- Data Collection & Portal**: Expand the centralized portal using automated data extraction from diverse government websites.
- Autonomous Application Assistant (AI Agent)**: Our AI Agent will guide farmers step-by-step through their application processes and workflows.
- Enhanced Program Discovery**: Allow farmers to search and filter by: County, Crop Type, and Conservation Practice. Supports Indiana House Bill 1149 (2025).
- Automated Reminders & Notifications**: Implement a system for sending automated deadline alerts and program milestone notifications.

IMPACT: C.R.O.P. simplifies access to conservation funding by turning scattered government programs into a single searchable platform for farmers

ACKNOWLEDGEMENTS & REFERENCES

We thank our mentor Geoff Bastow (Windrow Ag) and project owner Ben Forsythe for their expertise and guidance throughout this project. We are grateful for Indiana Soybean Alliance (ISA) and Indiana Corn Marketing Council (ICMC) for sponsoring this work and championing Indiana's farmers. Special thanks to the Data Mine at Purdue University for providing the platform that made this collaboration possible as well as the 2024-2025 team whose foundational work this project builds upon. We also extend our appreciation to Tha Fai and Briana Bonilla for their valuable contributions during the fall semester.