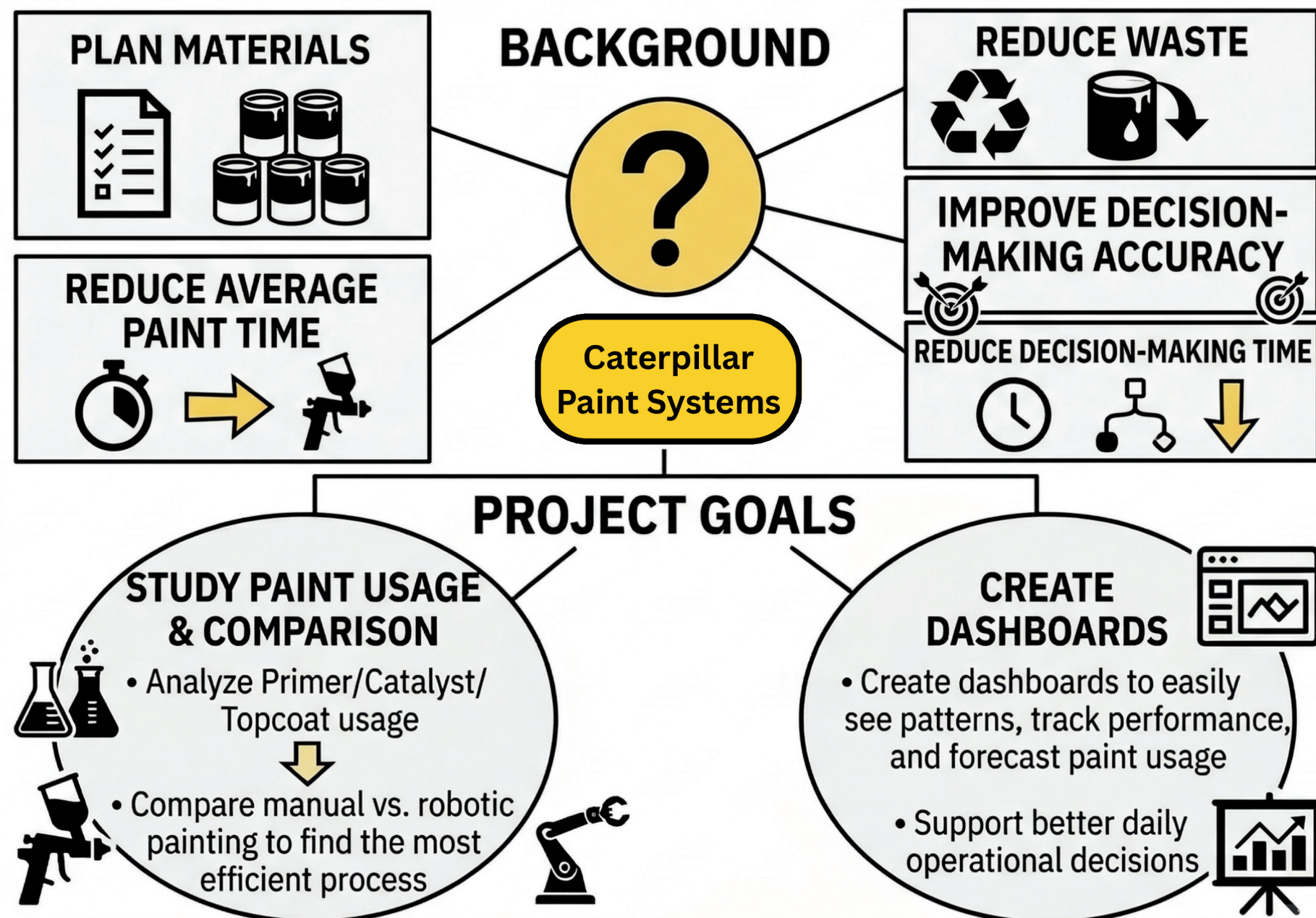
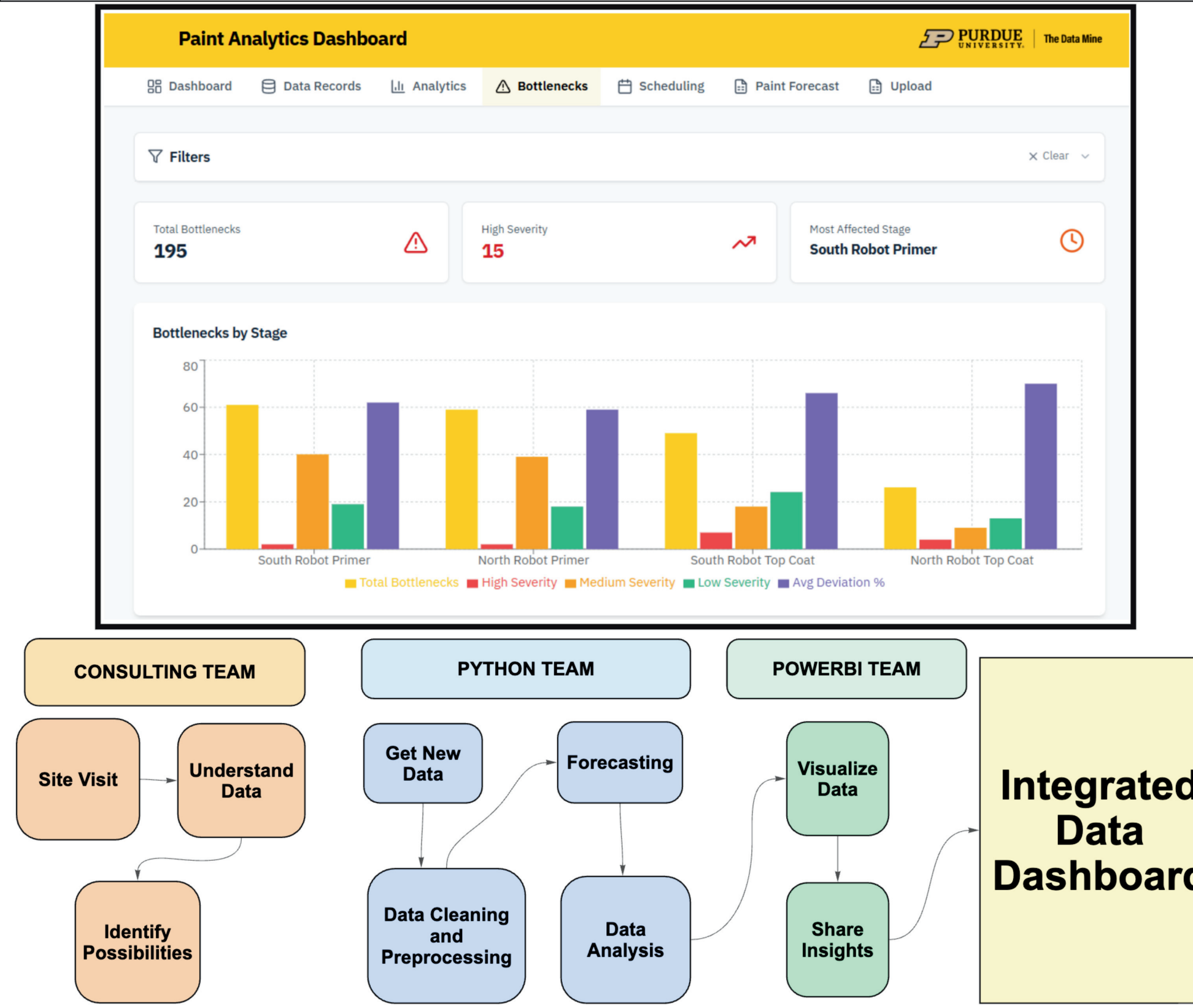


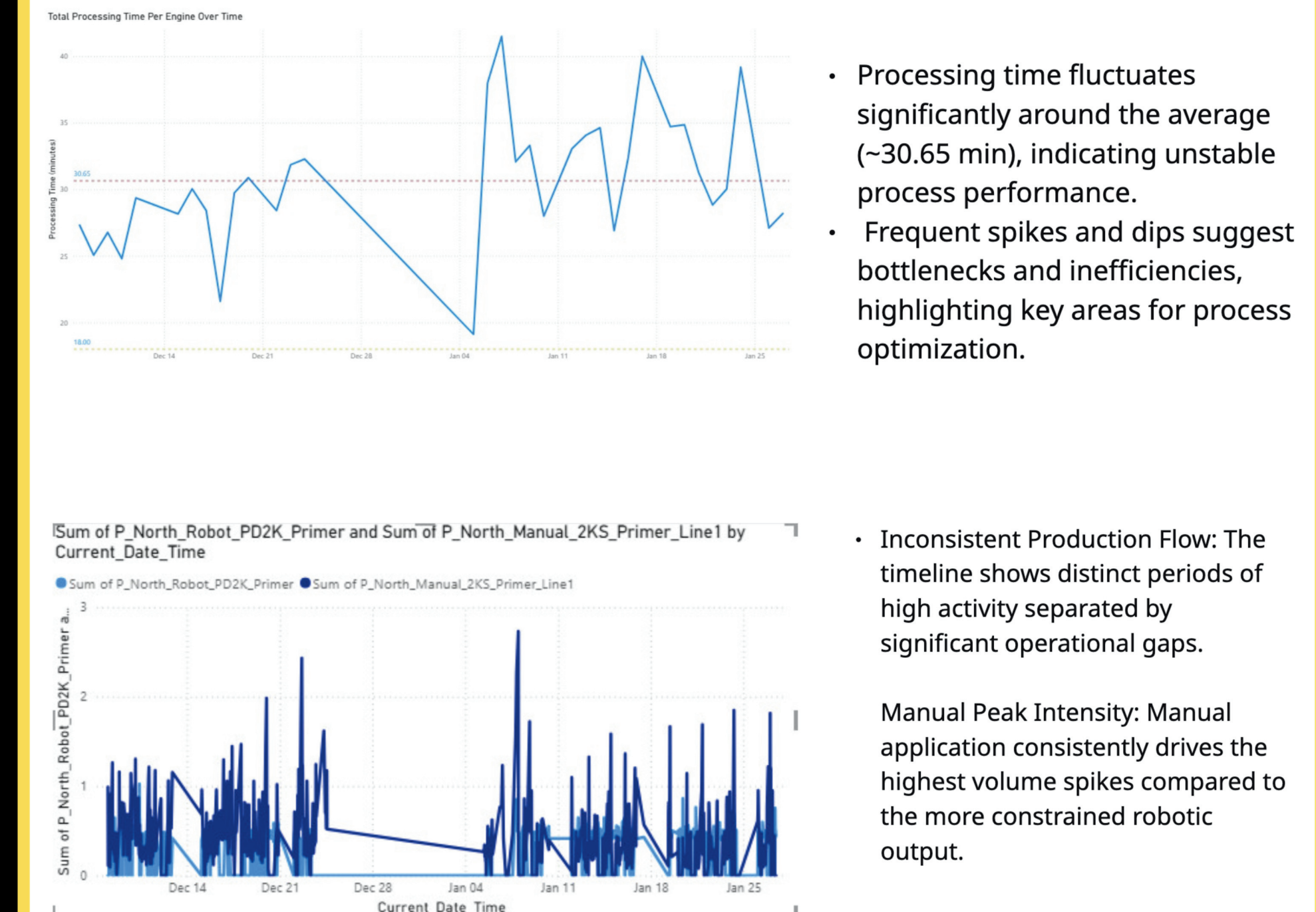
Introduction



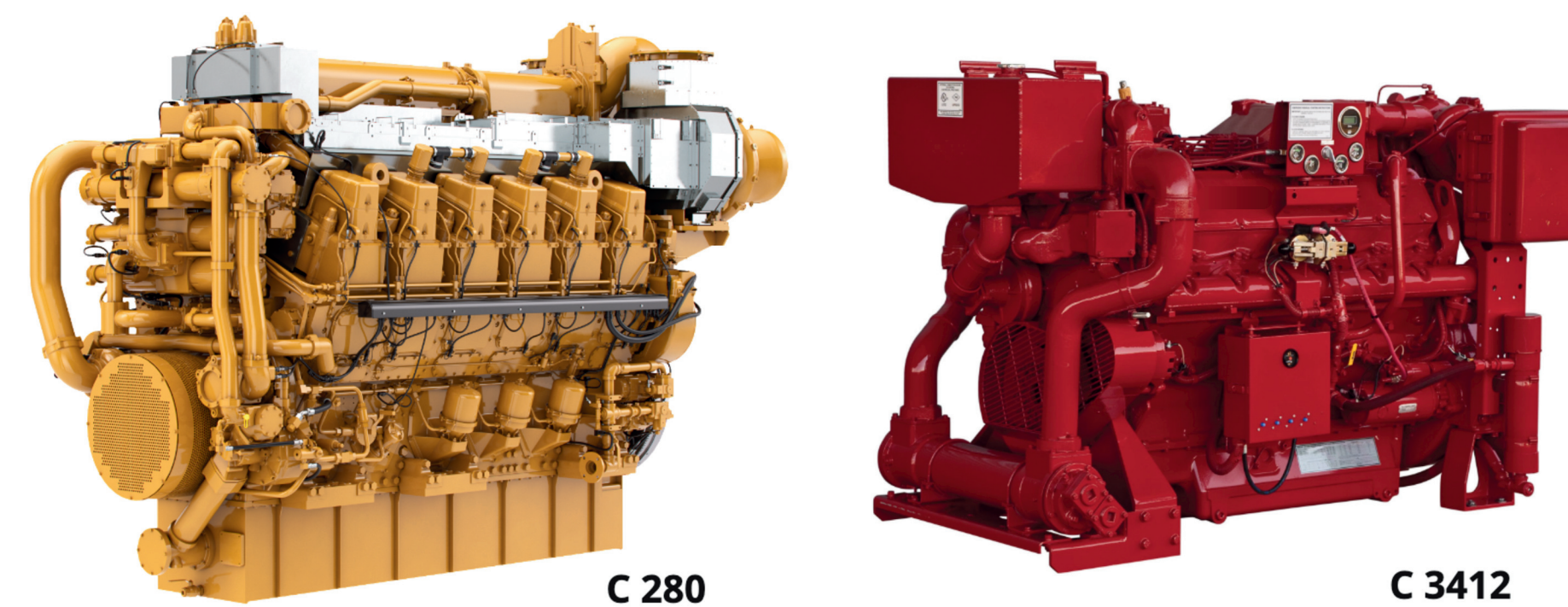
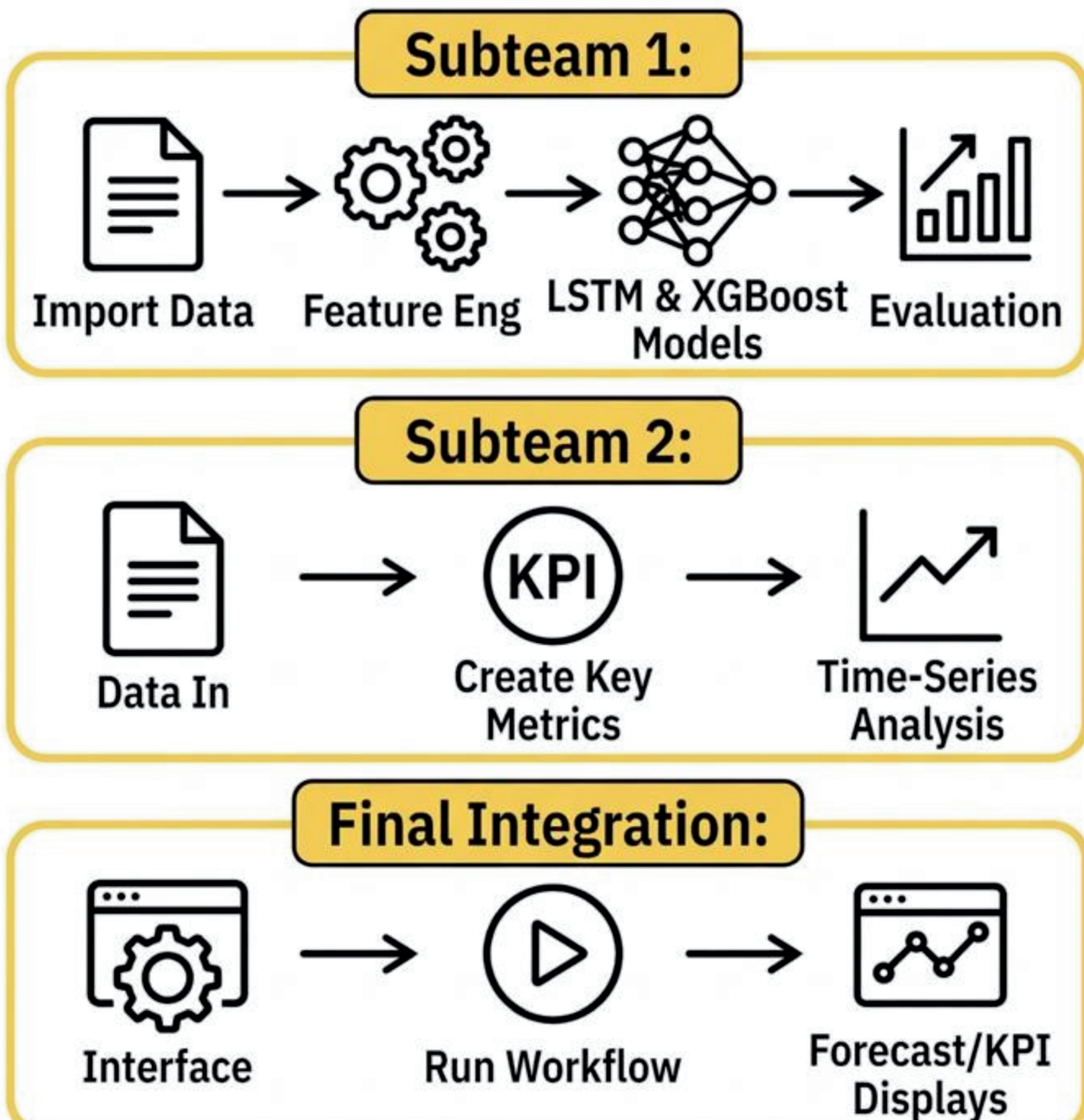
Dashboard



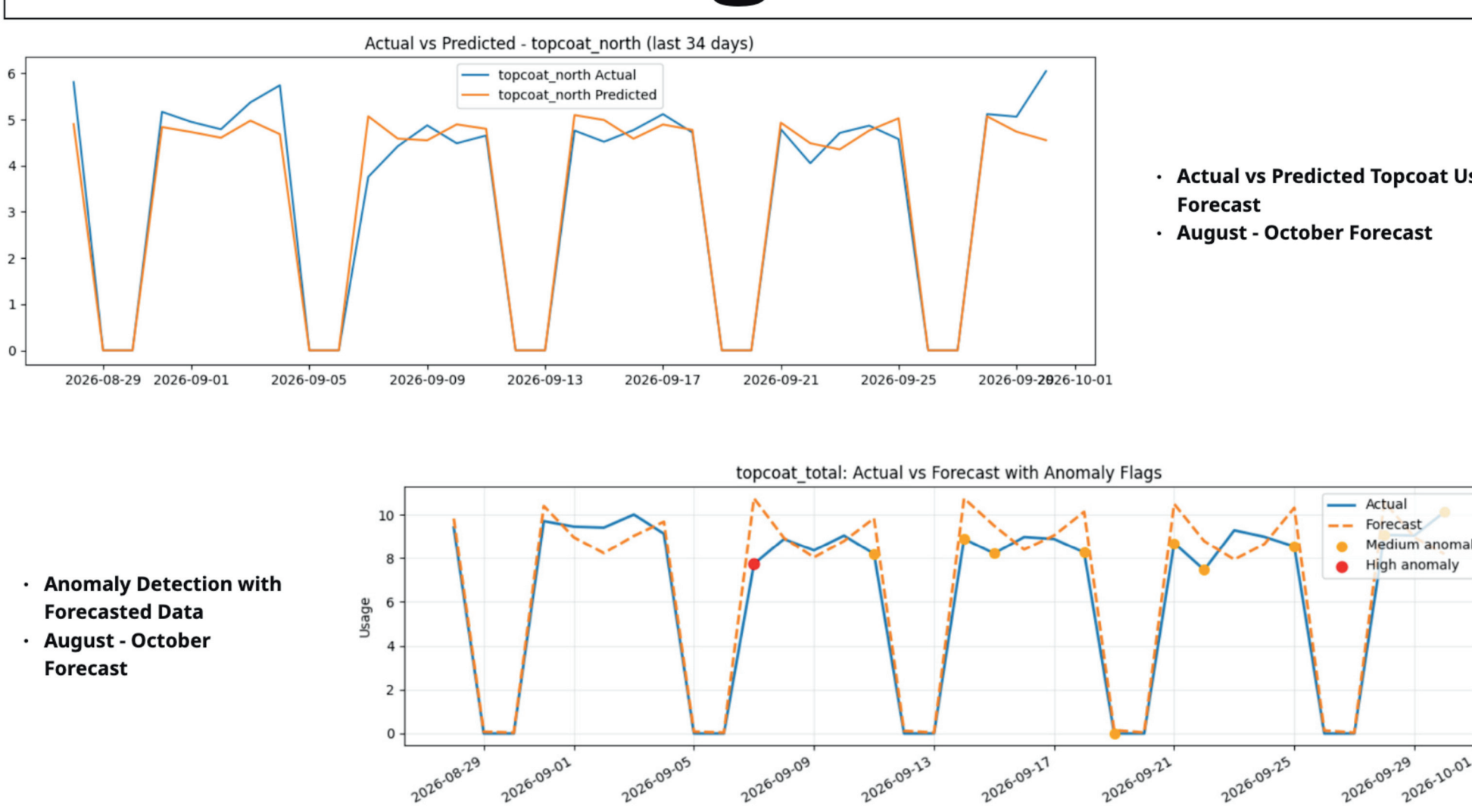
PowerBI Dashboard



Methodology



Forecasting Dashboard



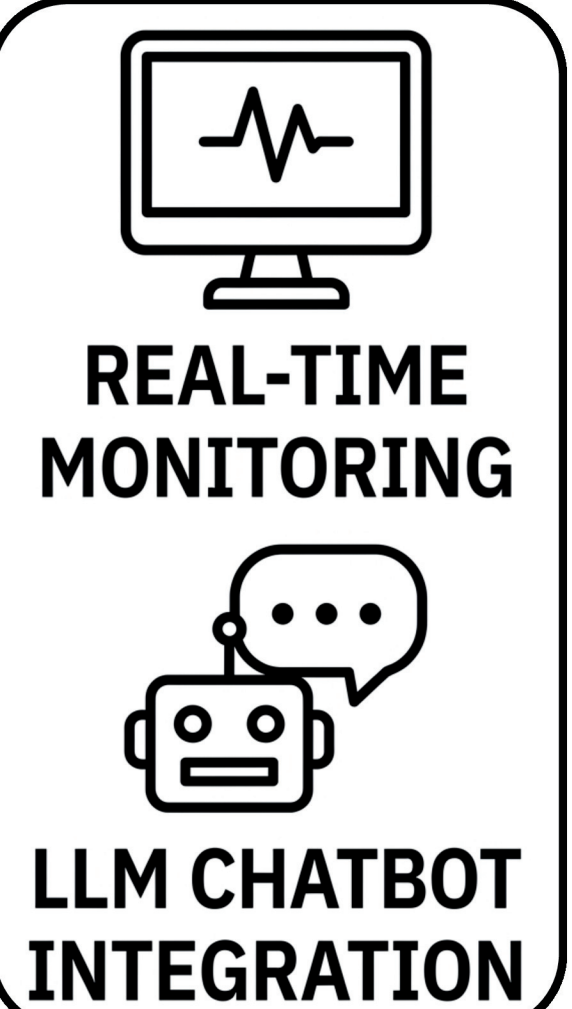
Conclusion + Future Goals

Key Insights

- Python models forecast daily primer, catalyst, and topcoat usage
- Power BI dashboards track consumption trends and performance
- Topcoat: manual and robotic show similar consistency
- Primer robotic process has slightly higher variability

Future Goals

- Improve Power BI dashboards for real-time KPI monitoring
- Add an LLM-powered chatbot for better insights



Acknowledgements

We thank **Caterpillar Inc.** for the opportunity to work on this project and for their guidance throughout the process. Special thanks to **Sandeep Mahajan, Mike Molfenter, and the Caterpillar team** for their valuable insights and support. We also appreciate the support of the **Purdue Data Mine**, our TA **Likhith Ramesha**, and **Shakir Syed** for their mentorship and assistance during this project.